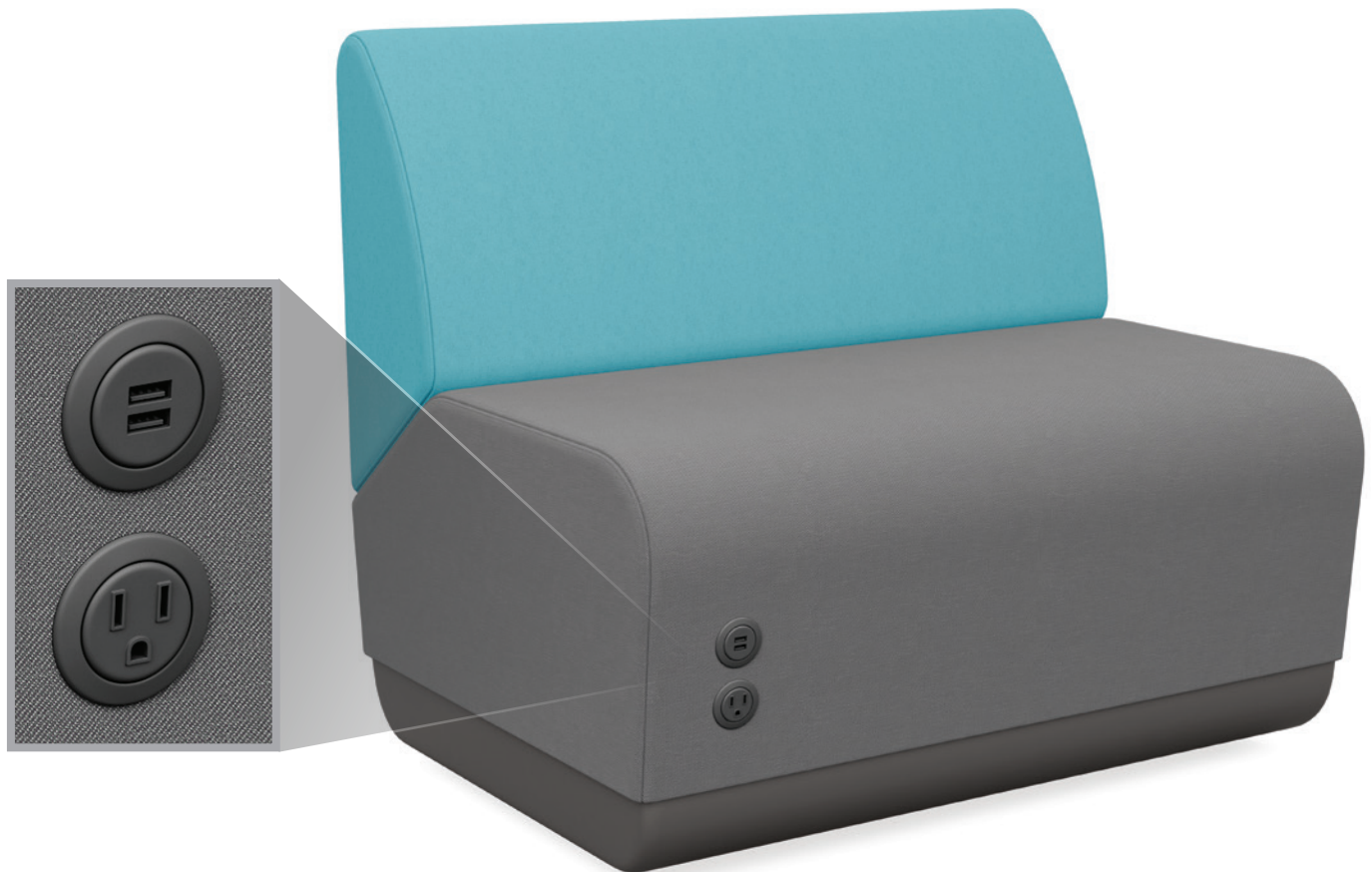


## Summary of Specifications

<b>LOCATION:</b>	Front or side of seats and benches
<b>CONFIGURATION:</b>	One AC and/or dual USB
<b>COLOR OPTIONS:</b>	Storm
<b>CORD LENGTH:</b>	10 feet
<b>PLUG:</b>	Standard three-prong plug
<b>CABLE MANAGEMENT:</b>	Cord routes under the base through a grommet. Cord can be stowed away under the base.
<b>KEY FEATURES:</b>	Factory-installed Tamper-resistant Spill-proof UL listed
<b>WARRANTY:</b>	Five years



## Power Locations (Power locations are from sitting position.)

### Seat Models

Side of Unit	Right Hand (PSR)	Left Hand (PSL)	Both Hands (PSB)
Single seat (PAS.FS17.SS1) & 1.5 seat (PAS.FS17.SS2)			
Front of Unit	Right Hand (PFR)	Left Hand (PFL)	Both Hands (PFB)
Single seat (PAS.FS17.SS1) & 1.5 seat (PAS.FS17.SS2)			

### Bench Models

Side of Unit	Right Hand (PSR)	Left Hand (PSL)	Both Hands (PSB)
Single bench (PAS.FS2.BNS1) & 1.5 bench (PAS.FS2.FNS2)			
Right-angled end bench (PAS.FS2.BNS3)			
Left-angled end bench (PAS.FS2.BNS4)			
Front/back of Unit	Right Hand (PFR)	Left Hand (PFL)	Both Hands (PFB)
Single bench (PAS.FS2.BNS1) & 1.5 bench (PAS.FS2.FNS2)			
Right-angled end bench (PAS.FS2.BNS3)			
Left-angled end bench (PAS.FS2.BNS4)			

Multiple Side	Both Sides of Unit, 2 R & 2 L Hand (PBB)	Both Sides of Unit, 1 R & 1 L Hand (PBRL)	Both Sides of Unit, Right Hand (PBR)	Both Sides of Unit, Left Hand (PBL)
Single bench (PAS.FS2.BNS1) & 1.5 bench (PAS.FS2.FNS2)				
Right-angled end bench (PAS.FS2.BNS3)				
Left-angled end bench (PAS.FS2.BNS4)				